

## LETTER FROM OUR PRESIDENT



EWI Ladies,



March, April, May and now June. These past few months have indeed been a challenge for us all. However, we have managed to stay connected through our Zoom meetings. It was important for us to CONNECT, regardless the format.

While reading the other day, I ran across a quote from Maya Angelou . . . "Determine to live life with flair and laughter." I thought, that is what has been missing in my life. . . Laughter. Concern about the Coronavirus had become the focus . . . not enjoying life fully, not laughing enough. I missed seeing you, my EWI family, in person.

Zoom cannot compete with being in fellowship with others.

After much discussion and input from you, the decision was made to meet in person for our June Chapter meeting. We will be meeting on Thursday, June 18<sup>th</sup> at the Peabody Hotel. I know some of you will be unable to attend at this time but I know that soon we should all be back together again.

Let's look forward to returning to some sense of normalcy soon.

*Sincerely,*

*Mable*

*Please share this publication with your Executive and other members of your organization.*

***"Leaders add value by serving others."***

## *EWI® of Memphis Chapter Meetings*

### June Board Meeting **Youth Villages**

June 11, 2020 @ 5:30pm



### **Program Venues 2020**

*If you would like to be a hosting  
venue for this great organization  
please contact*

*Veda Ajamu at National Civil Rights  
Museum 901-521-9699 x2227 or  
vajamu@civilrightsmuseum.org*

### June Chapter Meeting **The Peabody Hotel—Continental Room**

Each Representative will receive an invite

June 18, 2020 @ 5:30pm

**Speaker: Beverly Robertson**

**President & CEO,  
Memphis Chamber of Commerce**

**Please send all RSVPs**

**to cindy.lynch@youthvillages.org**

All guests invited as “prospective members” must be approved by Mable Barringer, President or Dawn Mokros, Retention and Recruitment Director. Members will be counted and billed as attending unless advised within 6 days or the Friday before the Chapter meeting that they will NOT attend.

### Board Meeting Recap

#### Income as of May 31, 2020

General Operating Account	\$ 44,500.00
B/C/DP	\$ 8,200.54
CD	\$ 53,868.56

**Total: \$ 106,569.10**

#### May Membership Report

Member Firms:	22
Member Reps:	22
Sustainers:	8
Life:	2

#### April Chapter Meeting Attendance Report

Member Representatives:	14
Sustaining Members:	0
Guests:	0
Life Member:	0
Guests:	4

**Total Attendance: 18**



## 2020 LEADERSHIP CONFERENCE & ANNUAL MEETING

LCAM Planning Committee  
has announced that  
LCAM 2020 will be a  
Virtual Meeting



### JUNE

- 6 Angel Halpern
- 7 Annetta Vick



## A Very Different Graduation Story . . .

This year's graduation programs were turned upside down with the Covid-19 pandemic. But that did not stop the Ajamu family from celebrating their son, Amari Ajamu. Amari graduated from Soulsville Charter School and Stax Music Academy as part of the Class of 2020. To celebrate, his family put on a car parade which included 32 vehicles, lots of balloons and honking horns, and one trumpeter playing Pomp and Circumstance. Amari was ready to take in the honors with his Royal Purple graduation cap and his face mask to mark this unique time in history. Mother, Veda Ajamu, their family, friends and neighbors were all there to proudly cheer on this graduate.

Amari will begin his college career at Grambling State University, where he will become a fourth-generation student and a drummer in the school's band—the World Famed Tiger Marching Band. This has been a dream for Amari since he was a little boy and attended a GSU homecoming game with his parents. The band instantly grabbed his attention and starting college there and marching with the band will fulfill a life-long dream.

We want to wish Amari every good wish for a successful and fun college experience. For a full article on Amari Ajamu's story please go to <https://dailymemphian.com/section/neighborhoods/article/13988/miracle-third-child-fourth-generation-grambling-scholarship-amari-ajamu>



## WHY DON'T YOU JOIN US ON SOCIAL MEDIA?

**Facebook.com: EWI of Memphis**

**Instagram.com: EWI Memphis**

**Twitter.com: @EWI\_Memphis**

**LinkedIn.com: EWI of Memphis**

**Need help creating an account or locating us on Social Media?**

**Angela.moore@ipaper.com**

## — SOCIAL SITES EXPLAINED —



**FACEBOOK**  
I like donuts



**TWITTER**  
I'm eating  
a #donut



**INSTAGRAM**  
Here's a photo  
of my donut



**LINKEDIN**  
My skills include  
donut eating

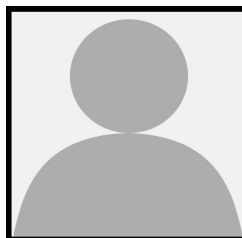
# we are social, lets connect

## 2019-2020 Board Members



### PRESIDENT

**Mable Barringer**  
National Kidney Foundation  
901-683-6185  
[Mable.barringer@kidney.org](mailto:Mable.barringer@kidney.org)



### VICE PRESIDENT

OPEN



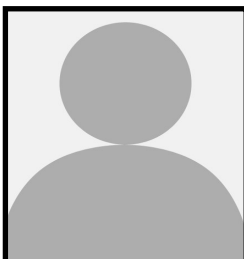
### SECRETARY

**Judy Carmichael**  
William Howard & Co. Financial Advisors, Inc.  
901-761-5068  
[jbcarmichael@whcfa.com](mailto:jbcarmichael@whcfa.com)



### TREASURER

**Cindy Lynch**  
Youth Villages  
901-251-4802  
[cindy.lynn@youthvillages.org](mailto:cindy.lynn@youthvillages.org)



### SERGEANT-AT-ARMS

OPEN



### PROGRAMS

**Veda Ajamu**  
National Civil Rights Museum  
901-521-9699  
[vajamu@civilrightsmuseum.org](mailto:vajamu@civilrightsmuseum.org)



### FUNDRAISING

**Angel Halpern**  
Regions Bank  
901-270-3283  
[angel.halpern@regions.com](mailto:angel.halpern@regions.com)



### RECRUITMENT & RETENTION

**Dawn Mokros**  
Amare Global  
901-277-1248  
[dmokros@yahoo.com](mailto:dmokros@yahoo.com)



### COMMUNICATIONS

**Krissie Heuer**  
Business Equipment Center  
901-345-5650 x 3109  
[kheuer@bec-memphis.com](mailto:kheuer@bec-memphis.com)



### B/C/DP

**Linda Grissom**  
Kemmons Wilson Companies  
901.344.1324  
[Lgrissom@kwilson.com](mailto:Lgrissom@kwilson.com)



### ADVISOR

**Deborah Vaughn**  
Staples  
901-566-6415  
[deborah.vaughn@staples.com](mailto:deborah.vaughn@staples.com)



### PARLIAMENTARY ADVISOR

**Martha Pallesen**  
Pallesen Consulting Services, LLC  
(901) 366-9673  
[marthapallesen@bellsouth.net](mailto:marthapallesen@bellsouth.net)

## Member Firms

### **Amare Global**

Dawn Mokros  
Kristi Emmons Jones

### **BancorpSouth**

Janice Toshach

### **Business Equipment Center**

Krissie Heuer

### **Crye-Leike**

Toni Green

### **FedEx Services**

OPEN, 1st Rep  
OPEN, 2nd Rep

### **Hicks Convention Services**

Jackie Hicks Chandler

### **Kemmons Wilson Companies**

Karen Curd  
Linda Grissom

### **Living Health Day Spa**

Cissie Pryor

### **Memphis Grizzlies**

Paige Perkins

### **National Civil Rights Museum**

Veda Ajamu

### **National Kidney Foundation**

Mable Barringer

### **Pallesen Consulting Services, LLC**

Martha Pallesen

### **Regions Bank**

Angel Halpern

### **River Inn of Harbor Town**

OPEN

### **Shelby County Schools**

Janie Emerson

### **Sheraton Memphis Downtown**

Vonne Gaddy

### **Smith & Nephew, Inc.**

Jane Bratton

### **Staples**

Deborah Vaughn  
Janet Samples, 2nd Rep

### **The Guest House at Graceland**

Rose Powell

### **The Peabody Hotel**

Tina Hamilton

### **William Howard & Co. Financial Advisors, Inc.**

Judy Carmichael

### **Youth Villages**

Cindy Lynch

### **Sustainers**

Rose Ann Bradley  
Melinda Edwards  
Carrie Ann Hardy  
Laura House  
Sherry McCraw  
Carrie Semmes  
Annetta Vick  
Diane Westphal

### **Life Members**

Betty Loveless  
Peggy Quinn

**2019 Golf Tournament**  
**TITLE Sponsor**



Play like a pro.  
Ship like one, too.

Practice makes perfect. When it comes to your shipping needs, FedEx delivers. Nothing gets you to the top faster than using a proven winner.

**FedEx. Solutions That Matter.<sup>SM</sup>**



FedEx is the proud sponsor of the FedExCup<sup>®</sup> playoffs.

©2013 FedEx. All rights reserved.





## OUR PRINCIPLES

To bring together key individuals from member firms of Executive Women International® to:

- Achieve world-class status as an organization through applied standards of excellence.
- Forge and cultivate mutual business and professional goals through personal association and interchange.
- Afford the opportunities and structure for leadership and professional development.
- Provide community involvement through scholarship programs for adults in transition, literacy programs within the community, and life-long learning opportunities for its representatives.

## MISSION

Executive Women International (EWI) brings together key individuals from diverse businesses for the purpose of: promoting member firms; enhancing personal and professional development; and encouraging community involvement.

## VISION

To enhance professional growth and development within a diverse group of women while empowering them to make a difference as they inspire others.

## VALUES

Integrity | Excellence | Respect | Collaboration